

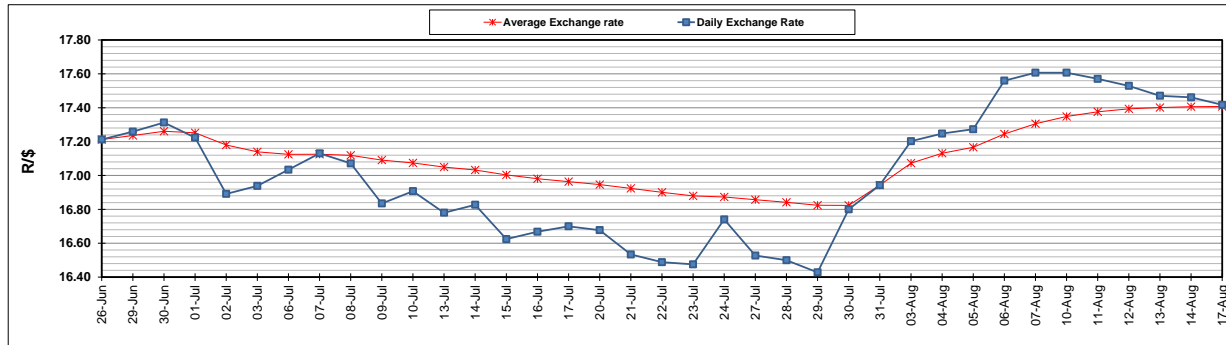
	PETROL 95 ULP	PETROL 93 ULP & LRP	DIESEL 0.05%	DIESEL 0.005%	ILL. PAR.
GAUTENG PUMP PRICE (SA c/l) AS FROM 05/08/2020	1,517.000	1,488.000	-	-	-
WHOLESALE PRICE (SA c/l) AS FROM 05/08/2020	-	-	1,348.560	1,352.960	742.828
SINGLE NATIONAL MAXIMUM RETAIL PRICE	-	-	-	-	934.000
BASIC FUEL PRICE - 17/08/2020 (SA c/l)	578.998	569.097	572.301	577.006	506.767
PRESS RELEASE CONTRIBUTION TO BFP 05/08/2020 - 17/08/2020 (SA c/l)	569.770	550.770	597.630	602.030	538.128
UNIT OVER/(UNDER) RECOVERY - 17/08/2020 (SA c/l)	(9.228)	(18.327)	25.329	25.024	31.361
AVERAGE BASIC FUEL PRICE 31/07/2020 - 17/08/2020	561.002	551.205	577.963	582.237	514.768
AVERAGE UNIT OVER/(UNDER) RECOVERY 31/07/2020 - 17/08/2020	7.518	(1.685)	8.417	8.543	13.610

ANALYSIS MOVEMENT OF AVERAGE OVER/(UNDER) RECOVERY

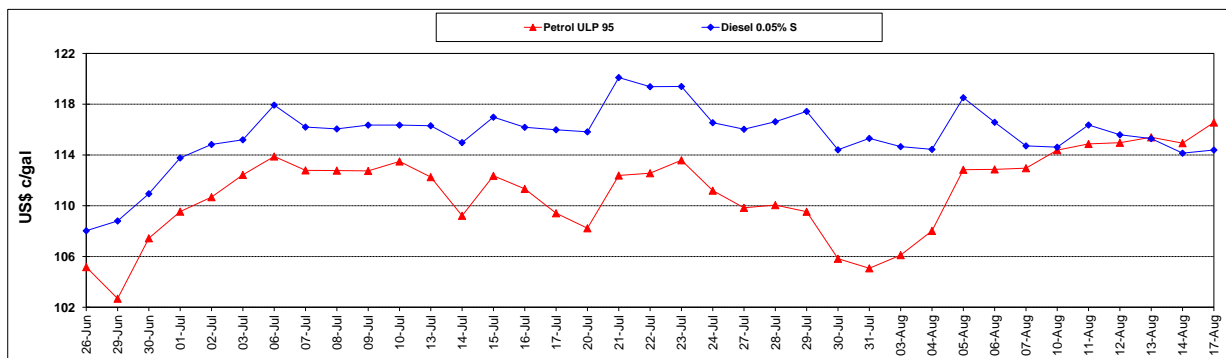
	PETROL 95	PETROL 93	DIESEL 0.05%	DIESEL 0.005%	ILL. PAR.
- MOVEMENT IN INTERNATIONAL PRODUCT PRICES	26.336	16.804	27.804	28.073	30.877
- MOVEMENT IN EXCHANGE RATE	(18.818)	(18.489)	(19.387)	(19.530)	(17.267)
AVERAGE UNIT OVER/(UNDER) RECOVERY 31/07/2020 - 17/08/2020	7.518	(1.685)	8.417	8.543	13.610

R/\$ EXCHANGE RATE - (R/\$17.4170 - 17/08/2020)

EXCHANGE RATE USED IN BASIC FUEL PRICE



INTERNATIONAL PRODUCT PRICES OF BASKET USED IN BASIC FUEL PRICE



BASIC FUEL PRICE IN SA CENTS PER LITRE

